

Appendix 10


Mandatory Disclosure

Mandatory Disclosure updated as on 30-11-2016

10.1.

AICTE File No	F.No. South-West/1-2811958604/2016/EOA
Date & Period of last approval	25/4/2016,2 016-17

10. 2.

Name of the Institution	Rajagiri School of Engineering & Technology
Address of the Institution	<p>Rajagiri School of Engineering & Technology, Rajagiri Valley, RajagiriValley P. O Kochi-39, Kerala.</p> 
City & Pin Code	Ernakulam, Pin-682 039

State / UT	Kerala State
Longitude & Latitude	Longitude-76.3576, Latitude-9.9932
Phone number with STD code	0484 2427835 ,0484 2660999
FAX number with STD code	0484 2426241
Office hours at the Institution	8.30A.M -4.30 P.M
Academic hours at the Institution	8.30A.M -4.30 P.M
Email	office@rajagiritech.ac.in
Website	www.rajagiritech.ac.in
Nearest Railway Station(dist in Km)	Ernakulam Town (Distance 15 kms)
Nearest Airport (dist in Km)	Cochin International Airport (25 kms)

10.3.

Type of Institution	Private-Self Financing
Category (1) of the Institution	Minority-Religious Type

Category (2) of the Institution	Co-Education
---------------------------------	--------------

10.4.

Name of the organization running the Institution	Rajagiri Educational & Charitable Trust
Type of the organization	Trust
Address of the organization	S.H.Province, Rajagiri P.O Kalamassery,Ernakulam,Pin-683104
Registered with	Government of Kerala
Registration Date	29.9.1994
Website of the organization	www.shprovince.org

10.5.

Name of the affiliating University	Mahatma Gandhi University
Address	Priyadarshini Hills P.O, Kottayam, Kerala
Website	www.mgu.ac.in
Latest affiliation period	2015-16
Name of the affiliating University	APJ ABDUL KALAM KERALA TECHNOLOGICAL UNIVERSITY
Address	CET Campus, Thiruvananthapuram

	Kerala -695016
Website	www.ktu.edu.in
Latest affiliation period	2016-17

10.6.

Name of Principal/Director	Dr. A. Unnikrishnan
Exact Designation	Principal
Phone number with STD code	0484- 2427160
FAX number with STD code	0484-2426241
Email	principal@rajagiritech.ac.in
Highest Degree	Ph.D.
Field of Specialization	Electrical Engineering

10.7

Governing Board Members	<ol style="list-style-type: none"> 1. Rev. Dr. Jose Cletus Plackal CMI, (<i>Chairperson</i>), <i>Provincial, Sacred Heart Province, & Manager, RSET</i> 2. Rev.Dr. George Peter Pittappillil CMI, (<i>Educational Secretary, CMI S H Province</i>)
-------------------------	--

- | | |
|--|--|
| | <ol style="list-style-type: none"> 3. Rev. Fr. Jose Alex Oruthayappilly CMI, (<i>Director, RSET</i>) 4. Rev. Fr. John Therezhath CMI, (<i>Administrator, RSET</i>) 5. Regional Officer, SWRC of AICTE, Bangalore (<i>Ex officio</i>) 6. Director of Technical Education, Government of Kerala (<i>Ex officio</i>) 7. Prof. Dr. M. S. Ananth,(<i>Former Director, IIT Madras</i>) 8. Dr.M.C.Dileep Kumar, (<i>Vice-Chancellor, Sree Sankaracharya University of Sanskrit, Kalady</i>). 9. Mr. George Varghese F.C.A.,(<i>Financial consultant</i>) 10. Shri. James Paul, (<i>Retd Chief Engineer, Govt of Kerala, Chief Consultant of Constructions</i>) 11. Shri. N. Jehangir, (<i>Vice Chairman & Managing Director, NeST group of companies</i>) 12. Dr. John M. George, (<i>Vice Principal, RSET</i>) 13. Fr.Dr.Jaison Paul Mulerickal CMI(<i>Representative of the CMI priests working in RSET</i>) 14. Dr. Joseph I. Injodey, (<i>Executive Director Rajagiri College of Social Sciences</i>) 15. Adv. Jose Kannamthanam, (<i>Senior Counsel, High Court of Kerala</i>) 16. Prof. M. L. Kothari, FNAE (<i>Former Professor, IIT Delhi</i>) 17. Dr. K. Poulose Jacob (<i>Pro Vice Chancellor, CUSAT</i>) 18. Prof.S.C.Sahasrabudhe(<i>Former Director,DA-IICT</i>) 19. Dr. A. Unnikrishnan (Secretary), <i>Principal, RSET</i> 20. Shri. Venugopal C. Govind F.C.A., (<i>Managing Partner, Varma & Varma, Chartered Accountants</i>) 21. Dr. Vinod Kumar P.B.(<i>Professor, RSET</i>) |
|--|--|

Frequency of meetings & date of last meeting	Once in every year. 30 th January, 2016

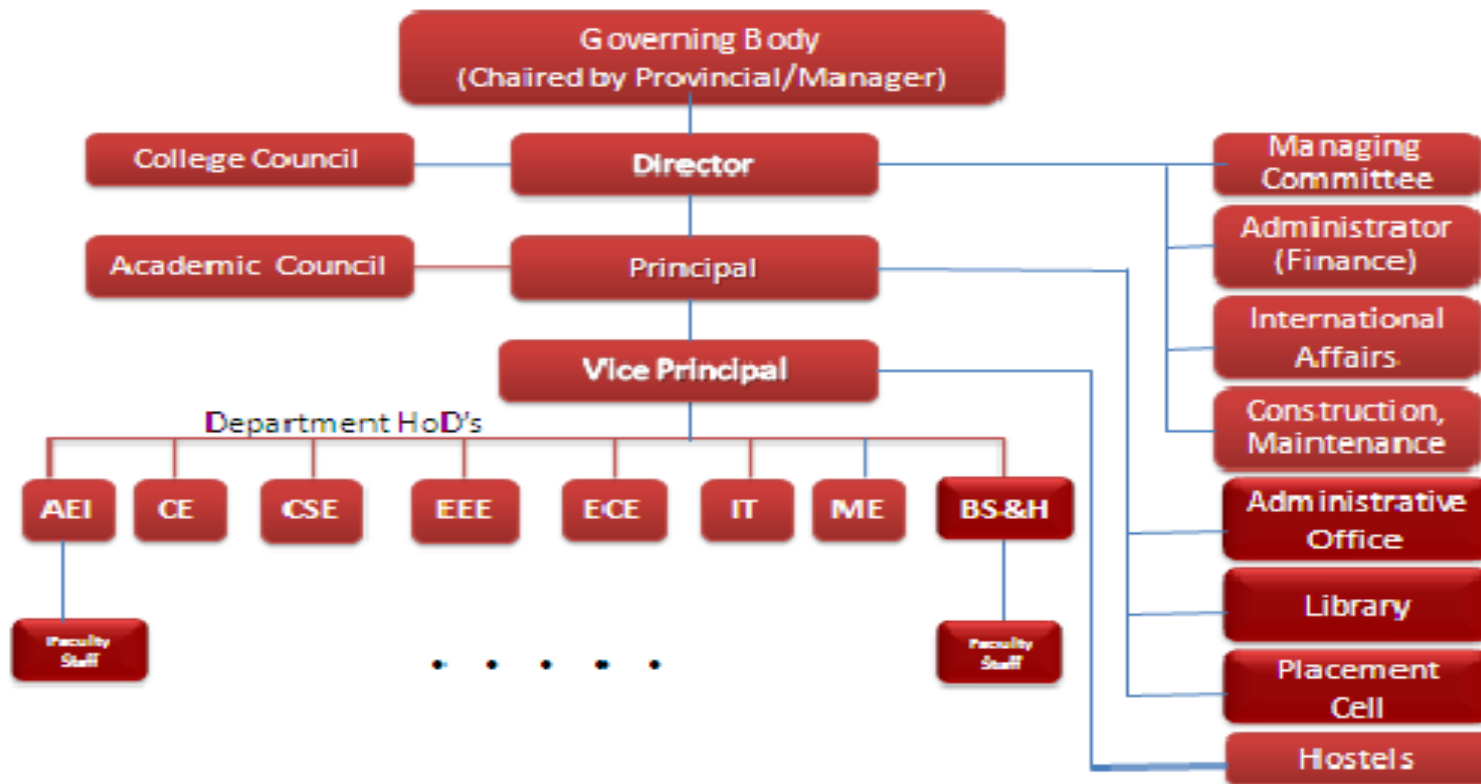
10.8

Academic Advisory Body	<ol style="list-style-type: none"> 1. Rev. Fr. Jose Alex CMI - Patron 2. Dr. A. Unnikrishnan – <i>Principal</i> – Chairperson 3. Dr. John M.George – Dean & Vice Principal 4. Dr. Vinod Kumar P.B. – <i>Secretary of the College Council</i> 5. Fr. Joseph Mathew CMI 6. Fr. Thomas P.J. CMI 7. Fr. Mejo Paul CMI 8. Ms. Liza Annie Joseph (HOD, DEI) 9. Prof. Dominic Mathew 10. Ms. Shanmuga Priya M. 11. Mr. Jobin K.Antony (HOD, DEC)
------------------------	--

- | | |
|--|--|
| | <ul style="list-style-type: none">12. Ms.Rithu James13. Ms. Harsha A.14. Mr. Anoop Thomas15. Ms. Swapna Davies16. Ms. Shimmi Asokan (HOD, DCS)17. Mr. Ajith S.18. Ms. Mary Priya Sebastian19. Mr. Biju Abraham20. Prof.K.S.Mathew21. Ms. Santhi B. (HOD, DEE)22. Ms. Jayasri R. Nair23. Dr.Unnikrishnan P.C.24. Mr. Binu A. (HOD, DIT)25. Prof. Kuttyamma A.J.26. Ms. Divya James27. Dr Thankachan T. Pullan (HOD, DME)28. Dr. Manoj G. Tharian29. Mr. Sidheek P.A. |
|--|--|

	<p>30. Mr. K. Uday Sankar</p> <p>31. Dr.Ruby Abraham (HOD, DCE)</p> <p>32. Prof.K.A.Ouseph</p> <p>33. Ms.Aysha Zeneeb Majeed</p> <p>34. Dr. Antony V. Varghese (HOD, DBSH)</p> <p>35. Mr. Jose Antony</p> <p>36. Dr. Sonia Paul (Secretary)</p>
Frequency of meetings & date of last meeting	Meetings are held regularly to discuss various policy and academic matters relating to the institution

10.9. Organizational Chart



10.10

Student feedback mechanism on Institutional Governance / Faculty Performance	Yes, Available
--	----------------

10.11

Grievance Redressal mechanism for faculty, staff and students	Available
---	-----------

10.12.

UG-B.Tech						PG-M.Tech				
Year	Branch	1 st Year of approval by the Council	Year wise sanctioned intake	Year wise Actual admissions	Cut off marks- General quota	Specialization	1 st Year of approval by the Council	Year wise sanctione d intake	Year wise Actual admissi ons	Cut off mark s- General quota
2016-17	AEI	2001	60+12*	55	Admission Will be on the basis of merit only by adding marks obtained in the entrance examination conducted by State	AE(Signal Processing)	2010	18	8	50% of the M.Tech. seats will be filled by the college from the rank list published
	CE	2013	60+12*	71						
	CSE	2001	180+36*	212		CSE Computer science & Inform ation system)	2009	24	22	

	IT	2001	60+12*	69	Commissioner for entrance examinations And the marks obtained for Maths,Physics,Chemistry/ equivalent in the qualifying examination. The marks will be apportioned in the ratio 50:50	IT(Net work Engg)	2011	18	18	by DTE. Remaining 50% of the M.Tech. seats will be filled by the college on merit
	ECE	2001	180+36*	190		ECE(VLSI Design & Embed ded System)	2009	24	23	
						ECE(Communication Engineering)	2013	24	19	
	EEE	2004	60+12*	68		EEE(Industrial drives&Control	2010	24	10	
	ME	2011	160+24*	136						
2015-2016	AE	2001	60 +12*	53		AE(Signal Processing)	2010	18	2	50% of the M.Tech. seats will be filled by the college from the rank list published by DTE. Remaining 50% of the M.Tech. seats will be filled by the college on merit.
	CE	2013	60+12*	70						
	CS	2001	180+36*	198		CSE Computer science &Inform ation system)	2009	24	10	
	IT	2001	60+12*	61		IT(Net work Engg)	2011	18	8	
	ECE	2001	180+36*	201		ECE(VLSI Design & Embed ded System)	2009	24	23	
						ECE(Communication Engineering)	2013	24	22	

	EEE	2004	60+12*	67	Admission Will be on the basis of merit only by adding marks obtained in the entrance examination conducted by State Commissioner for entrance examinations And the marks obtained for Maths,Physics,Chemistry/ equivalent in the qualifying examination. The marks will be apportioned in the ratio 50:50	EEE(Industrial drives&Control	2010	24	11	
	ME	2011	120 +24*	132						
2014-2015	AE	2001	60 +3*	62		AE(Signal Processing)	2010	18	8	
	CE	2013	60+3*	63						
	CS	2001	120+6*	126		CSE Computerscience &Inform ation system s)	2009	24	18	
	IT	2001	60+3*	66		IT(Net work Engg)	2011	18	9	
	ECE	2001	120+6*	123		ECE(VLSI Design & Embed ded System)	2009	24	20	

						ECE(Communication Engineering)	2013	24	19	
	EEE	2004	60+3*	60		EEE(Industrial drives&Control	2010	24	24	
	ME	2011	120 +6*	125						
2013-2014	AE	2001	60 +3*	63	50% marks for Mathematics separately and 50% marks for Physics, Chemistry and Mathematics taken together at the +2 or equivalent exams approved by the University	AE(Signal Processing)	2010	18	18	
	CE	2013	60+3*	63						
	CS	2001	120+6*	125		CSE Computerscience &Inform ation system s)	2009	24	24	
	IT	2001	60+3*	63		IT(Net work Engg)	2011	18	18	
	ECE	2001	120+6*	126		ECE(VLSI Design & Embedded System)	2009	24	24	
						ECE(Communication Engineering)	2013	24	24	
	EEE	2004	60+3*	63		EEE(Industrial Drives & Control	2010	24	21	
	ME	2011	60 +3*	63						

*5% seats Tuition fee waiver+15% seats PIO/Foreign Nationals.

B.Tech		% Students passed with Distinction	% Students passed with First Class	Students Placed	Average Pay package, Rs./Year	Students opted for Higher Studies
2015-2016	AEI	0.06	43.3	32	Rs.3.5lakh/annum	4
	CSE	11.4	59	101	Rs.3.5lakh/annum	4
	IT	0.03	32.7	40	Rs.3.5lakh/annum	8
	ECE	22.95	54.9	108	Rs.3.5lakh/annum	4
	EEE	28.57	41.2	44	Rs.3.5lakh/annum	4
	ME	0.04	31.14	47	Rs.3.5lakh/annum	2
2014-2015	AEI	0.08	62.7	40	Rs.3.4lakh/annum	8
	CSE	0.19	57.75	111	Rs.3.4lakh/annum	3
	IT	0.07	56.14	43	Rs.3.4lakh/annum	6
	ECE	26.49	56.4	104	Rs.3.4lakh/annum	8
	EEE	20.68	53.4	48	Rs.3.4lakh/annum	11

2013-2014	AEI	23.72	54.23	30	Rs.3.3lakh/annum	22
	CSE	21.18	61.86	95	Rs.3.3lakh/annum	4
	IT	7.5	45	23	Rs.3.3lakh/annum	4
	ECE	35.88	40.83	102	Rs.3.3lakh/annum	14
	EEE	37.28	47.45	47	Rs.3.3lakh/annum	3

	AEI	CE	CSE	ECE	E E E	IT	ME
Professional Society Members hips	ISOI -8 Members IEEE-1	ISTE-1 IEI-1	CSI -2 ACM-2 IEEE-1 ISTE-2	IEEE-3 IETE-1 ISTE-2 IETE Students Forum (ISF) members - 66	IEEE prof- 1member ISSE-11 members SEEM-2 member IEI- 1 member ISTE-2 member	CSI- 83	ISTE-4,IEI-7 Institution of MarineEngine ers-1, Institution of Standards Engineers-1 Institution of Plant Engineers-1 SAE-1, IIW - 7 ASHRAE,US A-1 Energy

							Conservation Society, Kerala- 1 Indian Society for Wind Engineering, Roorkee – 1 The combustion Institute- 1 Chartered Engineer (India)- 1
Professional activities	<p>1.ISOI Cochin chapter activities meeting conducted regularly</p> <p>2. Conducted Quiz Competition, idea Presentation and paper Presentation for under graduate</p>	NIL	<ul style="list-style-type: none"> •Workshop on “Introduction to LARAVEL- a PHP framework” (CSI,RSET) •Session on “Introduction to MATLAB” (CSI,RSET) •Training program on Introduction to LaTeX S7 CS & IT (CSI,RSET) •scramble (C Programming) competition (CSI,RSET) 	<ul style="list-style-type: none"> •Whats the funda?’ National level symposium conducted by IEEE student branch of Govt. Model Engineering College . •Performance Comparison of AODV and DSDV Routing 	<p>1.The IEEE Kochi subsection organized motivational sessions for the students.</p> <p>2. IEEE Workshop on Orientation Course on Solar Photo Voltaic.</p> <p>3. IEEE women’s day celebration on 8th March 2013 IEEE RSET- SB celebrated International Women’s day with the rest of the world by hosting various events in the campus.</p> <p>4. IEEE Workshop on PIC Microcontroller</p> <p>5. IEEE EWEK (various</p>	<ul style="list-style-type: none"> •Workshop on “Introduction to LARAVEL- a PHP framework” (CSI,RSET) •Session on “Introduction to MATLAB” (CSI,RSET) •Training program on Introduction to LaTeX S7 CS 	<p>1. NATIO NAL WELD MEET: KOCHI- 2015. (One Day Seminar on GENERATION NEXT: ADVANCEMEN T IN METAL JOINING on Friday 9th October 2015 in association</p>

	students.			<p>Protocols in MANET Networks</p> <p>•IEEE Distinguished lecture Program Assistive Technologies in Health Care by Professor Pradeep Kumar Ray, PhD Director,WHO Collaborating Centre on eHealth Asia-Pacific ubiquitous Healthcare research Centre (APuHC),</p>	<p>activities)</p> <p>6.Formation of IEEE-IAS Chapter on 25th Feb 2016</p> <p>7.Delegates from IEEE-Industry Applications Society , Various talks conducted on 1st September 2015</p>	<p>& IT (CSI,RSET)</p> <p>•scramble (C Programming) competition (CSI,RSET)</p>	<p>with The Indian Institute of Welding (IIW)</p>
--	-----------	--	--	--	---	---	---

				<p>UNSW Business School UNSW Australia (University of New South Wales), Australia on 31 March 2016</p> <p>•FireFox OS Mini App Day / Webmaker Event organised by IEEE SB RSET on Feb 7, 2015</p> <p>•IEEE RSET SB conducted a program 'VOLT' : Volunteer</p>			
--	--	--	--	--	--	--	--

				<p>Leadership Training, at Multimedia Hall during 3.35 – 4.30pm on 24th Feb 2015.</p> <ul style="list-style-type: none"> •IEEE RSET SB conducted Xamarin Workshop in Heisenberg Lab •IEEE RSET SB hosted an RL78 Design Workshop in our college on the 10th of March 2015 for two days. 			
Consultancy activities	NIL	MGS Associates lab testing of fly ash bricks & dalmia redimix	•Christian Professional medical colleges Admission Process(Rs 8 lakhs)	NIL	NIL	•Applied a DeitY project titled “Impact of irtualization	Pilot project from NPOL- CFD analysis of drogue

		mortar, Southern railway-Soil test				<p>techniques on network performance of Big data platforms”</p> <ul style="list-style-type: none"> •Prof Kuttamma A J initiated a MOU with CDAC •Biju Paul- Visited Sojo University Japan as a part of faculty exchange program. •Binu. A offers Ten day workshop on ZOPE for the employees of CIRM, CUSAT 	system deployment
Grants fetched	Modernization	NIL	NIL	DRDO	A Novel Solar Powered	NIL	NIL

	of Microprocessor lab under MODROBS for Rs.5,300,00. Process Control Lab Modernization under MODROB for Rs.19,400,00			Sponsored Seminar on Software Defined Radio of Rs.40000/- Modernisation of ARC lab under MODROBS for Rs.15,76,000/-.	Vehicle/ Wheel Chair for disabled funded by Center for Disability studies – A Govt. of Kerala Undertaking for amount of Rs. 30,000/.		
Departmental Achievements	<p>1. A one day workshop on “Industrial Pollution Control” on April 25, 2013.</p> <p>2. A five day workshop training for faculty for the course on “Industrial pollution control”. 25th</p>	<p>Talk on “Expect the Unexpected” by C.V.R.Murty, Director, IIT, Jodhpur on 8th April, 2016 for S8 students.</p> <p>Talk on “Campus to Corporate” by Shakeena S. Mohammed, Learning program Manager, IBM on</p>	<p>• Joe Augustine and Sijin Sebastian (2011-2015 B.Tech CSE, RSET) attended the VLSI-SOC Conference held in Daejeon, South Korea from 4th - 7th October, 2015 and presented paper titled "Dynamic migratory selection strategy for adaptive routing in mesh NoCs.</p> <p>• Conducted Short term course on “Effective Python</p>	<p>a. Installation, Demo and Training of NI USRP on 24th of Jan 2014, by Trident technologies.</p> <p>b. A 2-day training program for ANSYS High Frequency Software, which included HFSS (3D Full Wave Simulator)</p>	<p>A one day workshop on “Real Time Interfacing using MATLAB”, on January, 19, 2013.</p> <p>Department of Electrical & Electronics Engineering, as part of Eluxtra Association activity, conducted a one day workshop on “Introduction to VFD and its Industrial Applications” on November 16, 2013.</p> <p>organized a two day International workshop on</p>	<p>• Conducted Bridge Course- Logic Development & Introduction to Programming from 1st July- 7th July 2015 for B.Tech students with out computer science background</p>	<p>1. A two day training programme on the CAD/CAM software “CATIA” on 18th & 19th, June 2013</p> <p>2. Three days training programme on CATIA modeling</p>

<p>Nov 2013- 29th Nov 2013</p> <p>3.FDP on Honeywell Experion DCS 23rd April -26th April 2014</p> <p>4. A two day training program on "PLC, SCADA" on July 11 & 12, 2013</p> <p>5. Hands on Training Program on OrCAD PCB Suite on 12th June 2013</p> <p>6. Two day Training Programme on C6748 - DSP Kit, DAEI RSET in association with</p>	<p>April,2016 for s6,s4 students. Talk on "Why Concrete is so humane by Mr.Shelly S.Fernandez,GM, RMC on feb,2016.</p> <p>Talk on "Recent trends and opportunities in Civil Engg" by Mr.E.Kurian Mathew,Rtd. chief engineering KPWD & former principal of MACE.</p> <p>1 week training program for s6 students of civil engg on Autocad by Pindis</p>	<p>Programming" from 6th to 10th July 2015 for the faculty.</p> <ul style="list-style-type: none"> •Conducted Two hours lecture on "Best practices in PYTHON" for the S1 Computer Science students on 27th November 2015. •Conducted Bridge Course- Logic Development & Introduction to Programming from 1st July-7th July 2015 for B.Tech students with out computer science background •Conducted Workshop on "Latex- the documentation software" for S6 & S8 students from 21-25 Jan 2016 •Conducted Training on "Awareness to the implementation of computer networking" for S6 students on 	<p>and RF Circuit Simulation- lecture and hands on on 27th and 28th of January 2014 provided by the Entuple technologies .</p> <p>c.The Lab Staff of DEC was given training and hands-on in PCB Micro Project session was started on 27th Jan 2016 and lasted up to 1st Feb 2016. 54 Students were participated, with 2-3 students in each group.</p>	<p>'SOLAR PHOTOVOLTAIC POWER SYSTEMS'on 22nd and 23rd of July 2015.</p> <p>Dr. Magyar Peter, Fellow IEEE had an interaction with faculty members and M.Tech students on 'Exploring research areas' on 1st September 2015. Conducted Project Expo(Mtech IDAC) on 30th September 2015.</p> <p>conducted a talk on "Renewable energy and solar project installation" by Mr. RadhakrishananMundoli , Helios Renewables. on 16th December 2015 .</p> <p>organized a workshop on "Personality Development" for the students of S6 EEE,</p>	<ul style="list-style-type: none"> •Conducted Pre-project training on Android by CDAC from 18-1-2016 to 29-1-2016 •Conducted Pre-project training on PHP & MySQL by CDAC from 18-1-2016 to 29-1-2016 •Conducted Pre-project training on Raspberry Pi & Arduino by CDAC from 18-1-2016 to 29-1-2016 •Conducted Pre-project training on 	<p>software by trainers from EDS technologies, Kochi on 2nd, 3rd and 5th May 2014</p> <p>3.40 hours training workshop in Auto CADD 2D and 3D modeling.</p> <p>4.One day workshop on Autodesk Fusion 360 Software on 16th April 2016</p>
--	---	---	---	---	---	---

	<p>STARCOM Information Technology Ltd, Bangalore 26th Feb -29th feb 2015</p>	Learning Centre.	<p>27th Jan 2016</p> <ul style="list-style-type: none"> •Conducted Workshop on “Programming with Raspberry Pi and Arduino” for S6 & S8 students on 18-29 Jan 2016 •Conducted Training program on “Android Programming “ for s6 and S8 students 18-29 Jan 2016 <p>Conducted Training programme on “MySQL and PHP” for s6 and S8 students 18-29 Jan 2016</p> <p>Conducted Workshop on “Object Oriented Programming in Python” for CS Students from 29th Feb-30th April</p> <p>Conducted Training program on Android App</p>	<p>Seven Electronics circuits were identified for implementation. These were distributed among groups. After completing breadboard output, they were asked to solder the circuit and take circuit to product level.A demo presentation was conducted on 4th Feb 2016. Around 20 products were demonstrated . Three prizes (2nd Prize is shared by 3</p>	<p>RSET.on 20th and 21st Jan 20.</p> <p>conducted a five day workshop on “Hands on Training for Power Electronic Converters” for the students of S6 EEE, RSET on 21/01/2016 to 23/01/2016, 25/01/2016 & 27/01/2016.</p> <p>conducted a 3 day workshop on "Microprocessor and Micro controller" for the students of S6 EEE on 28/1/2016 to 30/1/2016</p> <p>Launched department association, ELUXTRA on Monday 4th April 2016.Inaugural address by Cdr.(Retd.) K.Shamsuddin (MD, Kerala Electrical and Allied Engineering Co.)</p> <p>Technical talk by Ms. Husna Mumtaz (Assistant Executive Engineer</p>	<p>Java in MARCH 2016</p> <ul style="list-style-type: none"> •Mohamed Jasim M and Muhammed Sadique UK, S4 Mtech attended AccessAbilities Expo 2016 Dubai, organized by Community Development Authority, Dubai (CDA) •Conducted Workshops for students on Data analytics by iTrax •Demonstration of proof of concept- 	
--	--	------------------	---	---	---	---	--

			Development for s4 students	<p>groups & 3rd prize is shared by 2 groups) were announced.</p> <p>Mini project presentation competition was onducted on 27th april 2016.Thirty project were presented.</p> <p>Department of Electronics and Communicati on Engineering organized a talk on "<i>A practical approach to configuring and</i></p>	,Kaloor Substation)	<p>Emergency Response System for India by Mohamed Jasim M, Muhammed Sadique UK, S4 Mtech and got Approval for real time implementati on in a junction in Kochin</p> <p>•Mr.Vivek joy and Mr.Harikrishn an has conducted a course on IoT at Govt. Engineering College, Idukki for the</p>	
--	--	--	-----------------------------	---	---------------------	--	--

				<p><i>optimizing building blocks for a wireless communication system</i>"by Sri. A K Prakash, Retd. Sr. Scientist of NPOL, Cochin. Talk will be at Multimedia Hall on 11th February, 2016 at 03.00 pm.</p> <p>Mr. Sethu Suresh of S6 EC Beta visited SOJO University ,Japan for two week sponsored program. preparation at the</p>		<p>M.Tech Students in Network Engineering. (April 8-9,2016)</p> <ul style="list-style-type: none"> •i-Trax, the technical association of Department of Information Technology is organized a course along with S6 IT students on advanced parser and networking for IT students on all Fridays (Time: 2.00 pm - 4.30 pm, Venue : S4 IT). 	
--	--	--	--	--	--	---	--

				<p>newly established Printed Circuit Board (PCB) Laboratory facility on the 1st of March, 2014, Saturday. The faculty member involved in its delivery was Dr. Deepti Das Krishna of EC Department.</p> <p>Microwave Lab Training for the Technical staff of EC Department conducted by Swapna Davies, Asst. Prof. of ECE department.</p>			
--	--	--	--	---	--	--	--

				<p>Three day workshop on VLSI System Design conducted on 16th, 17th and 18th December, 2014.</p> <p>Talk on smart Grid: Where Computing, Communication & Power Systems Meet” by ACM Distinguished Speaker Dr. Sandeep K Shukla of Virginia Tech on 04th July 2014.</p>			
--	--	--	--	--	--	--	--

				<p>Five day Technical staff development Programme during 12th to 16th January, 2015 .</p> <p>A Workshop “Electronic System Design and Manufacturing Workshop (ESDM)” on April 6, 2013.</p> <p>A one day workshop on “Mentor Graphic Tools” by experts from Trident Tech Labs Pvt Ltd,</p>			
--	--	--	--	---	--	--	--

				<p>Bangalore on May 17, 2013.</p> <p>A workshop for the faculty members from different colleges involved with “Wireless Communications” course under the MG University M. Tech.Communication Engineering syllabus on October 26, 2013.</p> <p>A two days training program on “Cadence® IC Design tool” on November 4 & 5, 2013.</p> <p>‘ELECTRONAU</p>			
--	--	--	--	--	--	--	--

				<p>TS' the department a ssociation of ECE organized the inaugural function of activities of the academic year 2015-2016 at 1.30pm on 30th September 2015 in the Chavara Hall, followed by a talk by Mr.Manoj Paul, President, Healthcare at SFO Technologies (NeST Group).</p> <p>Micro Project is a pre-semester activity for S4 ECE students,</p>			
--	--	--	--	--	--	--	--

				<p>which is a platform to improve their circuit implementation skills and apply innovative product idea to it.</p> <p>Micro Project session was started on 27th Jan 2016 and lasted up to 1st Feb 2016. 54 Students were participated, with 2-3 students in each group. Seven Electronics circuits were identified for</p>			
--	--	--	--	--	--	--	--

				<p>implementation. These were distributed among groups. After completing breadboard output, they were asked to solder the circuit and take circuit to product level. A demo presentation was conducted on 4th Feb 2016. Around 20 products were demonstrated. Three prizes (2nd Prize is shared by 3</p>			
--	--	--	--	--	--	--	--

				<p>groups & 3rd prize is shared by 2 groups) were announced.</p> <ul style="list-style-type: none"> •Mini project presentation competition was conducted on 27th april 2016.Thirty project were presented. <p>Department of Electronics and Communication Engineering organized a talk on "A practical approach to configuring</p>			
--	--	--	--	---	--	--	--

				<p>and optimizing building blocks for a wireless communicatio n system"by Sri. A K Prakash, Retd. Sr. Scientist of NPOL, Cochin. Talk will be at Multimedia Hall on 11th February, 2016 at 03.00 pm.</p> <ul style="list-style-type: none"> •Mr. Sethu Suresh of S6 EC Beta visited SOJO University ,Japan for two week sponsored 			
--	--	--	--	--	--	--	--

				program.			
Distinguished Alumni	<p>MARIYA GEORGE-2nd Rank.</p> <p>2.TREESA JOSEPH-3rd Rank.</p> <p>3. Mr.Ajith Viswanathan Pillai-1st Rank.M.Tech-AESP in M.G.Uni Varsity</p> <p>4. Kalyani Menon Power electronics technologist, Strategic Research Center, Rolls Royce plc United Kingdom</p> <p>5. Pravin Kuriakose Control Systems</p>		<ul style="list-style-type: none"> •Ms. Christina Terese Joseph IIIrd Rank - M.Tech. Computer Science & Information Systems •Joe Augustine ,Junior Research fellow,IIT Madras •Sachin Joseph Software Engineer at Microsoft •Koshy John Software Engineer II at Microsoft •Alan Koshy John Research Assistant at Fraunhofer FIT •Sarath S Menon Developer Associate at SAP •Sijin Sebastian Developer Associate at SAP •Sandra Alex Developer Associate at SAP •Aswathi Anna Mathew Developer Associate at SAP 	<p>Rijin John (2002-06) Patent holder & Lead Engineer at Alcatel Lucent.</p> <p>2. Althaf Jehangir (2004-08) CEO at SFO Technologies Pvt Ltd.,cochin</p> <p>3. Akash Mathew (2009-13) CEO & Co-Founder- CIED Technologies, Cochin, Kerala</p> <p>4. Arjun Narayanan (2006-10)</p>	<p>1.Mr. Joseph Babu (2008-12) - Co- Founder & Chief Marketing Officer, Raify</p> <p>2.Mr. Mathew John (2006-10) - Founder -Smart Energy Solutions</p>	<ul style="list-style-type: none"> •Nishanth Ravindran, CEO, Technovia Info Solutions Pvt. Ltd. He has started the company, which introduced a new concept “ City on Wheels“. Now a pilot project is running in Calicut District with the support from district administration. •Nithin Murali Team Lead Ernst & Young 	

	<p>Engineer at Rolls-Royce</p> <p>6. Aswin Krishnan A. R Project Application Engineer, INVENSYS</p>			<p>Scientist at VSSC Pursuing MTech at IIT, Mumbai</p> <p>5. Srijith.K (2005-09) BTech Ist Rank ECE Pursuing PhD at IIT, Chennai</p> <p>6. Ms. Shyama Sreekumar (2009-2013) B.Tech Ist Rank – ECE.</p> <p>7. sVaishnavi Balakrishnan B.Tech II Rank – ECE</p> <p>8. AshiqKallingal &Anto Varghese 2009-13</p>		<ul style="list-style-type: none"> •Aswin Aravind Technology Analyst Infosys •Syam Sasi QA Engineer Oracle •Swetha Mathew Senior System Engineer Infosys •Jose Joseph Mobile Application Developer Samsung •Jithu A Kumar Senior Software Engineer iGate •Lakshmi Sekhar 	
--	---	--	--	---	--	--	--

				<p>Co founders, Addictive innovations 9.JithinJojiAnc hanattu& Sony Mathew (2010-2014) Executive Director/Foun der at Probuk India 10.Prince Thomas II Rank ECE (2007-2011) Currently Working in Bosch 11.Ms Arathi S.G. IInd Rank Mtech VLSI 12. Ms Anju Suresh IIIRD Rank</p>		<p>Software Engineer TCS •Sanjay Menon Software Engineer Visual IQ</p>	
--	--	--	--	---	--	--	--

				Mtech VLSI			
--	--	--	--	------------	--	--	--

10.13.(Profile of the Faculty attached – Refer Website)

Name of Teaching Staff *	
Designation	
Department	
Date of joining the institution	
Qualifications with class/Grade	UG PG PhD
Total Experience in Years	Teaching Industry Research
Papers Published	National International
Papers Presented in Conferences	National International
PhD Guide? Give field & University	Field University
PhDs/Projects Guided	PhDs Projects at Masters level
Books Published/IPRs/ Patents	

Professional Memberships	
Consultancy Activities	
Awards	
Grants fetched	
Interaction with Professional institutions	

10.14 Admission quota	
Entrance test/admission criteria	<p><u>B.Tech-Admission</u></p> <p>Admission Will be on the basis of merit only. Rank list will be prepared by adding marks obtained in the entrance examination conducted by State Commissioner for entrance examinations and the marks obtained for Maths, Physics, Chemistry/equivalent in the qualifying examination. The marks will be apportioned in the ratio 50:50</p> <p><u>M.Tech- Admission</u></p> <p>At least 60% marks in BE / B.Tech in relevant branch is a must.</p>

Cut off /last candidate admitted	<u>B.Tech</u> Pass in higher secondary examination of the Board of HSE of Kerala or an examination equivalent there to with at least 50%marks in Mathematics separately & 50% marks in Maths, Physics, Chemistry/equivalent subject put together or equivalent grade. <u>M.Tech</u> 60% marks in related branch in B.Tech	
Fees in rupees	Course	Tuition Fee
	B.Tech I Year	Rs.75,000
	B.Tech II Year	Rs.75,000
	B.Tech III Year	Rs.75,000
	B.Tech IV Year	Rs.75,000
	M.Tech I Semester	Rs.65,000
	M.Tech II Semester	Rs.65,000
	M.Tech III Semester	Rs.65,000
	M.Tech IV Semester	Rs.65,000
Number of Fee Waivers offered	TFW-AEI-3 ,IT-3,EEE-3,CE-3,CSE-9,ECE-9,ME-6, SC/ST/OEC students are exempted from payment of fees at the time of admission. Their scholarship will be sanctioned by the welfare Department of the Government.	

Admission Calendar

B.Tech

Submission of online application form begins 5th May 2016

Last date for submission of application. 2nd June 2016.

Publication of data entry details on website 2nd June 2016.

Last date to notify entry defects, if any 4th June 2016.

Publication of merit list 4th June 2016

Selection and admission begins 7th June 2016

Admission closes on 25th July 2016.

M.Tech

Submission of online application begins 14th June 2016

Last date to receive applications 30th June 2016

Publication of details on the website 1st July 2016

Last date to notify entry defects ,if any 4th July 2016

		Admission test(for college merit candidates) 6 th July 2016
		Publication of merit list 7 th July 2016
		Interview and admission 12 th July 2016
		Commencement of classes 1 st August 2016
		Admission closes on 12 th August 2016
PIO quota		Yes
Laboratory details	List of Major Equipment/Facilities	
Department	NAME OF THE LAB	LIST OF MAJOR EQUIPMENTS/FACILITIES
Electrical & Electronics		
		"Auto transformer 1Φ, Auto Transformer 3Φ, DC Voltmeter, AC Voltmeter , DC Ammeter , AC Ammeter , Digital Multimeter , Power Factor Meter , Analog Stopwatch , Variable Rheostat , Wattmeter , Loading Capacitor 3Φ, DC Unregulated Power

	Basic Electrical Lab	Supply, Knife Switch, Energy Meter1 Φ , Energy Meter 3 Φ , Loading Inductor3 Φ .
	Electrical Measurements Lab	Earth Tester, Variable Rheostat, AC Ammeter, Inductance Box, DC Regulated Power Supply, Capacitance Box, Resistance Box, Wattmeter, Power Factor Meter, DC Unregulated Power Supply, DC Ammeter, AC Ammeter, AC Voltmeter, DC Voltmeter, Lux Meter, Analog Stop Watch, Sensitive Galvanometer, Super Sensitive Galvanometer, Light Spot Galvanometer, Crompton Potentiometer, Slide Wire Potentiometer, Vernior Potentiometer, Volt Ratio box, Wheaston Bridge, Post Office Box, Standard Resistance, Digital Multimeter, Wattmeter, Electronic Standard Cell, Loading Rheostat, Knife Switch, AutoTransformer1 Φ , AutoTransformer3 Φ , Energy Meter1 Φ , Light Spot Galvanometer, Phase Shifting Transformer, Transformer1 Φ , Kelvin Double Bridge, Frequency Meter, LVDT Trainer, Current Transformer, Potential Transformer, Llyod Fisher Square, Hibbert's Magnetic Standard, Lamp Load, Centre Zero Galvanometer, Digital Stop Watch, Loading Inductor3 Φ
	Electrical Machines Lab	3 Φ Slip ring induction motor, 3 Φ Squirrel cage induction motor,1 Φ Induction motor, 3 Φ AC Generator, DC Shunt motor, DC Series motor, DC Compound motor, DC Generator, Auto transform3 Φ , DC Voltmeter, DC Ammeter, AC Ammeter, Digital Tachometer, Insulation Tester, Rectifier Unit 100A, Loading Rheostat 1 Φ , Loading Rheostat3 Φ , Loading Inductor3 Φ , Wattmeter, Energy meter 1 Φ , Energy meter 3 Φ , Transformer1 Φ , Transformer3 Φ , Variable Rheostat, Display Board Of Single Phase and Three Phase distribution, AC Voltmeter, AutoTransformer1 Φ , Analog Tachometer, Knife Switch, DC Series Motor-Generator Set, Double Cage Induction Motor, Winding Study Motor, Synchronous Motor-DC Shunt Motor Set, Cascade Induction Motor Set, Induction Generator Set, Working Model of Three Phase &Single Phase Alternator, Working model of dc generator, Cut section of dc machine, Model of 3phase ac winding, Reluctance motor, Synchronizing lamp set, Analog clamp tester, Digital tachometer with sensor, Power factor meter ,

		Hand drill, Motor startor, Alternator, Spring balance, Rectifier unit 150A
	Control System Lab	Function Generator, CRO, AC Servo Motor, AC Synchro Transmitter and Receiver Demonstrator, Stepper Motor Demosrator Unit, DC Position Servo System Demonstrator, Propotional Integral Derivative Cotrol System, DLP Projector, Projection Screen Tripod ,Synchro transmitter reciever trainer, Temperature control system, DC servo motor pid controller
	Power Electronics Lab	Inductive load, PMDC motor, 1 HP DC motor, Boost chopper, IGBT based 4 quadrant chopper, 1KVA Isolation transformer, 89C51 based firing pulse generator, Mosfet module, IGBT module, PWM inverter control module, Digital multimeter, Digital Tachometer, Oscilloscope, Power Supply, Power scope, Portable dc ammeter, Portable ac ammeter, Portable dc voltmeter, Portabler ac voltmeter, 3 Φ full wave bridge rectifier, 1 Φ Full wave bridge rectifier, 3 Φ Power quality analyser, Transformer, Digital Tachometer, Characteristic module of power electronic devices, SCR chopper circuit module for SCR commutation, Firing Circuit module of SCR, Triggering circuit (Ramp And Pedestal), Bridge converter module of power electronic devices, Variable Rheostat, Micro processor trainer kit, Function generator, Decade inductance box, Decade capacitance box, Decade Resistance Box, Digital Storage Oscilloscope, High voltage differential probe 25MHz, Digital UPS
	Simulation Lab	Computer, Projector LCD, UPS, Battery, P SIM (Software)
		3 Φ Induction Motor (180W), AC Induction Motor Vector control kit (TMDSHVMTRPFC), Computer with Control Suite Software, 3 Φ Permanent Magnet Synchronous Motor with Control kit, 3 Φ Permanent Magnet Synchronous Motor with Control kit, BLDC Motor (180W), 57BL116

	Electric Drives and Controls Lab	<p>Texas control kit(DRV8301) with SMPS 48V, 10 A</p> <p>Computer with Instaspin Software, TMDSDCDC2KIT, BLDC Motor (180W), 57BLS116 with mechanical load</p> <p>BLDC Motor (180W), 57BLS116 with inductive load</p> <p>BLDC Driver + Multi Function Controller + BLDC Motor (57BLS116), Computer with Arkmotion Software, Ingenia AC Servo Driver AC Servo Motor, Moons 200W, AC Induction Motor with DC Generator, Operating Station1,AC Drive (Powerflex 755), Loading Rheostat, Computer with Rockwell Software, DC Motor with DC generator, Operating Station 2, DC Drive (Powerflex DC) Loading Rheostat, Computer with Rockwell Software, AC Servo Motor, Operating Station 3,Servo Drive (Ultra 3000), Computer with Rockwell Software, Digital Storage Oscilloscope, Three Phase Inverter</p>
	Electrical Wokshop	Inverter.LCR Q meter
Electronics and Communication	RF Lab	Microwave Benches,Sat:com:trainer, Spectrum analyser,Antenna trainer,Optical fibre trainer,RF com: trainer,Storage oscilloscope,Oscilloscopes,DC power supplies,Function generator,Computer.
	Systems Lab	computers, dsp starter kit,printer,ups,rfid card reader, universal programmer,RF GPS GSM ZIGBEE Modules,ARM kit,OrCAD,Matlab
	Advanced Resource Lab	Computers, dsp trainer kit, vlsi trainer kit, spartan3 , FPGA board,Finger print scanner,Embedded system development kit.
	Basic Electronics Lab	Digital storage Oscilloscopes, DC power supplies, Function generators, Ammeters, voltmeters, Analog & Digital multimeters,Audio power meter, Decade boxes, Rheostats, Computers.
	Communication Lab	Digital storage oscilloscopes,DC power supplies,Function generators,Decade boxes,Communication trainers,LCR meters,IC tester,Soldering & Desoldering station,Projectors,Computers.
	Hardware Lab	Storage oscilloscopes,DC power supplies, Function generators,Digital ic trainer kits, Multimeters,Universal programmer,Micro processor & Micro controller kits,Computers,Logic analyser,acoustic lab items.


	Integrated Circuits Lab	Oscilloscopes, DC power supplies, Function generators, Ammeters, voltmeters, Analog & Digital multimeters, Soldering & Desoldering station, Decade boxes, Rheostats, Computers
	Logic Design Lab	oscilloscope, function generator, digital trainer, analog multimeter, digital mutimeter, power supply
	PG LAB (Shockley Lab)	HP Compaq Desktop PC(13), Dell Optiplex 740 Desktop PC(5) Dell Precision T3500 (1), Dell Optiplex390(11) ARM kits, FPGA kits, PSoC kits, Cadence, Comsol, HFSS, NI-USRP Software defined radio(SDR) Experimental set up.
	PG LAB (Shannon Lab)	computers(dell precision T5610-1No.; dell optiplex3020MT-30Nos), UPS
	Electronics Engineering Workshop	Digital storage Oscilloscope, Function Generator, DC Power supply Soldering Iron and PCB Holder.
	PCB Lab	Drilling Machine, Shearing Machine, Double sided UV Exposure unit, Soldering station, PCB holder, Magnifying lens with lamp.
APPLIED ELECTRONICS AND INSTRUMENTATION	MEASUREMENT/ TRANSDUCER LAB	"Capacitance level sensor , LVDT calibrator with screw gauge , Bridges , Temperature transmitters - B, E, J, K, R, S, T (Types), RTD, DSO, IC tester, Ph meter, RTDs, Temperature calibrator, , CRO , Function Generator, power supply, Strain gauge, trainer kits, computer, Digital multimeter. Rheostats, Trainer kits (Speed, force), strain gauges, Parallel plate capacitance trainer kit, Viscometer, Conductivity meter, Thermometers, Megger, Syncro transmitter\receiver, Photocell trainer kit, Ultrasonic sensor kit , soldering station"
	PROCESS CONTROL LAB	Cascade Control Loop , Level Control Loop , Control valve Characteristics Loop , Flow control Loop , Pressure Control loop , I/P converter trainer , Dead weight Tester , PLC Trainer kit , LabVIEW , NI ELVIS , Computer systems-20 Nos , Control valve Hysterisis , DCS System , HP Pro3330MT PC (13) , hP Monitor (13) , SMPS Power supply , FRC with Gauge (4) , Conductivity meter , Portable Universal

		Calibrator ,DCS (Honeywell),Engg.Station,HART,SCADA ,Transmitter Interface Level ,PLC (Honeywell) ,Multipara meter(pH) , REDOX,Power supply,DSO,FG,Air dryer,Electronic Weighing Balance,IC Tester
	MICROPROCESSOR LAB	Cathode Ray Oscilloscopes, Digital Storage Oscilloscope, Function Generators,DC power supply, DC Voltmeter DC Ammeter ,Multi meters, IC Testers(Analog and Digital), Microprocessor Peripherals[Analog to Digital, Digital to Analog, Stepper Motor Interface, Traffic Control System] Decade Boxes(Resistance,Capacitance,Inductance),Trainer Kits[8085 Microprocessor,8086 Microprocessor,8051 Microcontroller, Digital IC, Key Board monitoring,ASLKV2010 (TI)],Raspberry Pi Scientific kit, Raspberry Pi Model B Essential kit(including 11" HDMI monitor & Mini wireless keyboard& Mouse) , Demonstration Boards
APPLIED ELECTRONICS AND INSTRUMENTATION		[dsPICDEM2,CAN Bus Monitoring, MPLAB ICD2],FPGA Multifunction Evaluation system(Xilinx Spartan 3E), Anvyl Spartan 6 E FPGA Board, Universal Programmers, Desktop Computers,Multimedia projector,DSP Processor Kit,Beaglebone Black,NI-USB DAQ 6210 CARD,Software:-ORCAD PCB Suite (5 user license)
	FOURIER LAB	Networking Switch(2 Nos), Networking Rack(1 Nos), Intel Core I5 Computer(25 Nos), HP Compaq 18.5 inch LED LCD Monitor(27 Nos), QE190AV Computer Workstation(2 Nos), Creative Satellite Speaker(5 Nos), Projector(1 Nos), DSO(2 Nos), Signal Generator(2 Nos),DSP Development Kit(9 Nos)
INFORMATION TECHNOLOGY	QUANTUM	Server:- Sun Microsystems Ultra 20(2), HP Compaq 6005 Pro Microtower Amd Athlon™ X2 B24 processor(59), Dell optiplex Intel Core i3(4), Network Switches-Cisco(2),Netgear(2) Windows 2008 server, Windows XP Professional, Microsoft Office 2007, IBM Rational Rose (30),Ubuntu(63),
	HERCULES	8085 Microprocessor Trainer Kit (30), 8086 Microprocessor Trainer Kit(1), 89c51 microcontroller


		Trainer Kit(1), Stepper Motor Interfacing Card(6), Traffic Light Interfacing Card(6), HP Compaq Desktop PC(6), Microcontroller Development Board With Programmer(1), Fiber Optic Trainer(1), Router (2), Switch (5), Satellite Link Emulator(1), Rasberry Pi scientific kit (1), Rasberry Pi complete kit (1)
	PG LAB-NETWORK ENGINEERING	Intel Xeon Computer(work station)-(1 nos), Core i3(10 nos) ,Core i5-(10 nos), Cisco router-Cisco2901(1 no), Cisco console cable(1 no), Cisco SG300 28 port managed switch(2 nos), Cisco Dual Band Signal Point Access point(2 nos), Netgear Prosafe 12 port Fiber Gigabit L2+PoE+ Managed Switch(1 no), Netgear AGM 731 F-SXLC-SEP(2 nos), Mrotek Transreceiver (1 no)10/100/1000 Cable Tester (1 no), EPSON EB-S02(LCD Projector-1 no)
COMPUTER SCIENCE & ENGINEERING	Bohr	"Brain2- SUNFIRE X2100 , 6 sun ultra ,IBM(AIX),5 Compaq ,HCL INFINITY ,SUNFIRE X2200 (2 Nos), video library - SUNFIRE X2100 ,IBM server e ,series,Net gear 24 port + 2 gigabit switch (1nos) , Net gear 16 port gigabit switch, D-link 24 port Switch (3 nos), Net gear 16 port Switch , Cisco Wireless lan controller (1nos), Hp procure switch (1nos), wireless access point,Sunfirex4170,UPS+Battery,Vmware+Emc storage, Dell R720 ,Microsoft Campus Agreement, HP Laserjet Pro MFP,
	Heisenberg	Dell Optiplex 3020,RAM :- 8 GB,HD:- 500 GB, i5, 65 nos, Dell Monitor 18.5 ' :- 65 nos.
	CODD lab	Hpcompaq (17) ,Dell optiplex(8), Infocus Projector
	Central computing Facility	"HP Compaq DX 2335 Desktop (63 nos), Konica Minolta Bizhub 210 (B/w printer), Konica Minolta Bizhub c 200 color printer, HP Scanner (1 no), Projector (1 No), Swithces 7 nos, Ups Emerson 2 nos.,watchguard firewall,Dell router,Dell optiplex (3),18 Batteries"
	Photon	Dell optiplex 390(63)

	Turing	Dell optiplex(25),Dell precision t1600(3),Dell precision t35000(2),DellT410 server(1)
MECHANICAL ENGINEERING	Fluid Mechanics Laboratory	<ol style="list-style-type: none"> 1. Metacentric height apparatus 2. Bernoulli's Theorem Apparatus 3. Adjustable Channel Apparatus 4. Reynold's Apparatus 5. Pipe friction Apparatus 6. Calibration test rig for Venturi meter & Orifice meter 7. Pitot Tube Apparatus 8. Notch Apparatus 9. Orifice & mouth Apparatus 10. Cut Models of different Valves 11. Pipe die set, pipe wrench, spanners etc.
	Heat Engine Lab	<ol style="list-style-type: none"> 1. Twin Cylinder Four Stroke Diesel Engine Test Rig 2. Four Cylinder Four stroke Petrol Engine Test Rig 3. Single Cylinder Slow speed Diesel Engine (Retardation Test) 4. Multy Cylinder Diesel Engine Test Rig 5. Single Cylinder Two Stroke Petrol Engine- Test Rig 6. Cleaveland Flash & Fire Point Apparatus 7. Red Wood Viscometer 8. Bomb Calorimeter apparatus

		9. MCPE Test Rig Apparatus 10. Cut Section model of Single cylinder two stroke Petrol Engine 13. Cut Section model of Single Cylinder four stroke Diesel Engine. 14. Air Conditioning Test Rig 15. Refrigeration Test Rig
MECHANICAL ENGINEERING	Machine Tools Lab	1. Lathe-15 Nos 2. MIG Welding Unit 3. TIG Welding Unit 4. Radial Drilling Machine 5. Power Hack Saw 6. Gas welding Unit 7. Bench Grinding Machine 8. Lathe assy. and Cutting tools
	Hydraulics Machine Lab	1. Pelton Turbine Test Rig, 2. Francis Turbine Test Rig, 3. Kaplan Turbine Test Rig, 4. Hydraulic Ram Test Rig, 5. Gear Pump Test Rig, 6. Jet Pump Test Rig, 7. Maltby Stage Pump Test Rig, 8. Centrifugal Pump Test Rig, 9. Reciprocating Pump Test Rig , 10. Self Priming Test Rig , 11. Cut Section model of Centrifugal Pump , 12. Cut Section model of Reciprocating Pump , 13. Cut Section model of Self Priming Pump, 14. Models of different pump Impellers and Turbine runners.
	CAD/CAM Lab	1. Computer systems (hp Z 230 Tower workstations) 40 nos

		2.Server- 1 no. 3.Catia v6 FLM discover pack 33 user pack 4. Projection Screen 4. .Projector
	Advanced Machine Tools Lab	1. Shaping Machine (Make:Sgar 18") - 8 nos 2. Slotting Machine (Make : KB Punched 7") - 8 nos. 3.Universal Milling Machine with vertical attachment (IFW UV-2) - 1 no
	Mechanical Measurement Lab	1 Bourdone pressure gauge trainer 1 no 2 Michelson interferometer 1 no 3 Gear tooth vernier 1 no 4 Sine bar 1 no 5 V-Block 1 no 6 Surface plate 1 no 7 Strain measurement trainer module 1 no 8 Temperature measurement module 1 no 9 Temperature measurement module (thermocouple) 1 no 10 Planimeter 1no 11 Digital sound level meter 1 no 12 Anemometer 1 no 13 Surface roughness 1 no

		14 Tool Makers microscope 1 no 15 Profile Projector 1 no 16 Inside micrometer 1 no 17 Micrometer head 2 nos 18 Magnetic stand 1 no 19 Digimatic indicator 1 no 20 Vernier calliper 1no 21 Universal bevel protractor 1no 22 Precision levels with adjusting 1 no 23 Vibration measurement system 1 no 24 Dial indicator 1no 25 Digimatic calliper 1 no 26 Maintenance kit for Gauge block 1 no 27 Gauge block set 1 no 28 Outside micrometer 1 no 29 LVDT trainer kit 1 no
	MECHANICAL SYSTEMS LAB	Universal vibration test Rig,Static & Dynamic Balancing Apparatus,Universal GovernorApparatus Model,

		
CIVIL ENGINEERING	Survey Lab	<ol style="list-style-type: none"> 1. Theodolite - 11 Nos 2. Plane Table- 11 Nos 3. Pantagraph - 1 No 4. Levelling staff - 10 Nos 5. Tangent clinometer - 1 No 6. Hand Level - 1 No 7. Ceylon Ghat Racer - 1 No 8. Box Sextant - 1 No 9. Measuring Tape- 6 Nos 10. Ball Pen Hammer - 6 Nos . 11. Steel Peg - 40 Nos, 12.Total Station with accessories- 1 No. 13.Teachers table- 1 No


		14. Students table -17 Nos. 15. Plastic chair - 35 Nos. 16. Steel Almeerah-2Nos. 17. White board- 1No. 18. Notice Board- 1 No. 19. Wooden rack- 1 No.
	Civil Workshop	1. Land Measuring Chain - 12 Nos 2. Ranging Rod/ Offset Rod - 38 Nos 3. Cross Staff with Pole- 9 Nos 4. Optical Square - 2 Nos 5. Plane Table Set - 3 Nos 6. Spirit Level - 2 Nos 7. Magnetic Trough Compass - 2 Nos 8. Planimeter - 1 No 9. Levelling Staff- 5 Nos 10. Dumpy Level - 8 Nos 11. Prismatic Compass - 11 Nos 12. Transit Theodolite - 1 No 13. Plumbing Fittings - LS 14. Arrows - 51 Nos 15. Measuring Tape- 9 Nos 16. Wooden Mallet - 3 Nos

		17. Wooden Peg - 17 Nos 18. Plumb Bob - 3 Nos 19. Vernier Caliperernier 4 Nos. 20 . Teachers table - 1No. 21. Students table-18No. 22. Plastic chair- 32 No. 23. Wooden stool- 5 No.
	Geo-Technical Lab	1. Pycnometer - 5sets 2. Sieve shaker - 1set 3. IS Brass sieves- 1set 4. Soil Hydrometer-4no 5. Is sieve 75microns- 1no 6. High speed stirrer-1no 7. Core cutter-1no 8. Sand pouring apparatus-1no 9. Liquid limit device-2no 10. Spatula-4no 11. Plastic limit apparatus-1no 12. Shrinkage Limit-2no 13. Compaction Test Apparatus-1no 14. Permeability Apparatus-1no 15. Overhead Tank-1no

		16. Consolidation Apparatus-1no 17. Direct Shear Test Apparatus-1no 18. Triaxial Test Apparatus-1no 19. Unconfined Compression Tester-1no 20. Vane Shear Apparatus-1no 21. Table: 18 Nos. 22. Plastic Chair: 2 23. Plastic Chair: 2 24. Wooden stool: 33 25. White board: 1No. 26. Steel Almirah : 1 No. 27. Computer: 1 No. 28. Hot Air oven -1 no
	MT LAB-I	1. Universal Testing Machine- 1 2. Shear Test Attachment -1 No. 3. Extensometer- 1No. 4. Torsion Testing Machine - 1 No. 5. Impact Testing Machine- 1 No. 6. Vickers Hardness Tester- 1 No. 7. Rockwell cum Brinell Hardness- 1 No Testing Machine 8. Torsion Pendulum - 1 No.


		9. Clerkmaxwell Apparatus-1 No. 10. Dial Gauge- 2 Nos 11. Teachers Table- 1 No. 12. Jefferson Chair- 36 Nos. 13. Steel Almirah- 1No. 14. Notice Board- 1No. 12. Plastic chair-2 No.
	Material Testing Lab II	1. Vicat Apparatus-1no 2. Steel Mould-6nos 3. Vibration machine-1no 4. Automatic mortar mixer-1no 5. Lechatelier mould-1no 6. Lechatelier flask-1no 7. Air permeability apparatus-1no 8. Compaction factor apparatus-1no 9. Slump test apparatus-1no 10. Consistometer-1no 11. Flow table-1no 12. Kelly Ball Apparatus-1no 13. Lateral Extensometer-1no 14. Longitudinal Compressometer-1no 15. Flexure Testing Machine-1no

		16. Pycnometer-5nos 17. Bulk Density Measures-1set 18. Tile Flexure strength Testing Machine- 1no 19. Tile abrasion testing machine-1no 20. Concrete Test hammer-1no 21. Gauging trowel 22. Tamping rod-4nos 23. Concrete Mixer Pan type-1no 24. Vibrating Table-1no 25. Cast Iron mould-9no 26. IS sieves GI- 2set 27. IS sieves brass-2sets 28. Cylindrical metal measure-1no 29. Aggregate crushing value apparatus-1no 30. Beam Mould 150x150x700-3nos 31. Hot air oven-1no 32. Beam Mould 100x100x500-4nos 33. Needle vibrator- 1no 34. Electronic Balance 10kg-1no 35. Mechanical Platform 300kg-1no 36. Students table: 18 37. Wooden stool: 36
--	--	---

		38. Steel Almeerah: 2Nos. 36. Cylindrical mould-3no
ENGINEERING CHEMISTRY		PH meter, Conductivity meter, colorimeter, potentiometer, Analytical balance, stirrers, Glass wares
ENGINEERING PHYSICS LAB		CRO, Optical Fibre Instrument, Diode Laser, Spectrometer, Travelling Microscope, Thermocouple

10.15. Infrastructural Information

Classroom/Tutorial Room facilities	<div> <div>Class rooms</div> <div>- 46</div> </div> <div> <div>Tutorial rooms</div> <div>- 6</div> </div> <div> <div>PG Class rooms</div> <div>- 12</div> </div> <div> <div>Seminar halls</div> <div>- 5</div> </div> <div> <div>Drawing halls</div> <div>- 2</div> </div> <div> <div>Central computing facility</div> <div>- 1</div> </div> <div> <div>Computer Labs</div> <div>- 16</div> </div> <div> <div>Central Library</div> <div>- 1</div> </div> <div> <div>Department library</div> <div>- 4</div> </div> <div> <div>Laboratories</div> <div>- 50</div> </div> <div> <div>Workshops</div> <div>- 3</div> </div> <div> <div>Conference Room</div> <div>- 3</div> </div> <div> <div>HOD's rooms</div> <div>- 8</div> </div> <div> <div>Auditorium</div> <div>- 1</div> </div> <div> <div>Language Lab</div> <div>- 1</div> </div> <div> <div>Examination Halls</div> <div>- 5</div> </div>
Computer Centre facilities	<div>720 PC/Laptop available to students,31 PCS/Laptop in language lab,</div> <div>Internet Bandwidth in Mbps:130,Internet contention ratio:1:1</div> <div>Printers available to the student:57</div> <div>Number of Legal system software:5</div> <div>Number of Legal Application software:25</div>

Library facilities 	Total Library Area in sq m	685.21 Sq.M.
	E Journal Subscription	E Journal Package: 1 .ASCE 2.ASME 3.ASTM 4.IEEE 5.J-Gate 6.McGrawHill's 7.Elsevier 8.Springer
	Reading Room seating Capacity	201
	Reprographic Facility	Yes
	Working Hours from to	8.00 A.M. – 8.30 P.M. Sundays and Holidays – 9.30 A.M-4.00 PM
	Multimedia PCs and Digital library facilities	30 PCs

	<p><u>Digital library facilities</u></p> <p><u>E – Alethea</u> : RSET Digital library includes 1. Links to various sites of academic interest. 2. Public domain materials like Conference Papers, Electronic Theses and dissertations, Technical Reports, FAQ"s and electronic books.</p> <p><u>Institutional Repository</u>: includes 1. Faculty collections : papers/articles/invited lectures. 2. Previous University Question Papers 3. RSET internal examination question papers. 4. Proceedings of the conference organized by RSET 5. Student project report and seminar report.</p> <p><u>Video Library</u>: (Streaming video archive) Video lectures procured from NPTEL and C – DEEP IIT Bombay</p>
Total expenditure on books, journals and subscription	Rs. 44,43,787-
Current Annual Budget	Rs. 61,00,000-

Auditorium/Seminar halls/Amphi	<div data-bbox="678 349 1003 603" data-label="Image"> </div> <div data-bbox="1025 349 1384 614" data-label="Image"> </div> <div data-bbox="1019 347 1240 387" data-label="Text"> <p>Yes ,Available</p> </div>
Cafeteria	<div data-bbox="703 644 1117 922" data-label="Image"> </div> <div data-bbox="1527 790 1736 828" data-label="Text"> <p>Yes ,Available</p> </div>
Indoor Sports facilities	<div data-bbox="678 949 880 986" data-label="Text"> <p>Yes ,Available</p> </div>
Outdoor Sports facilities	<div data-bbox="1117 1019 1500 1308" data-label="Image"> </div> <div data-bbox="1494 1276 1702 1316" data-label="Text"> <p>Yes ,Available</p> </div>

Gymnasium facilities		Yes ,Available
Facilities for disabled		Yes ,Available
Any other facilities	  	Transporting Post Office Healthcentre

10.16

Boys Hostel	Yes, Available 
Girls Hostel	Yes, Available 
Medical & other Facilities at Hostel	Yes, Available

10.17

Academic Sessions	Forenoon session and Afternoon Session
Examination system, Year/ Sem	Semester system
Period of declaration of results	After finalization of results by the university for every Semester

10.18

Counseling /Mentoring	Available
Career Counseling	Available
Medical facilities	Available
Student Insurance	Group Insurance Available

10.19

Students Activity Body	Available
Cultural activities	Available
Sports activities	Available
Literary activities	Available
Magazine /Newsletter	Available
Technical activities/Tech Fest	Available
Industrial Visits/Tours	Available
Alumni activities	Available

10.20.

Name of the Information Officer for RTI	DR. A. UNNIKRISHNAN
Designation	Principal
Phone number with STD code	0484 - 2427160
FAX number with STD code	0484-2426241
Email	office@rajagiritech.ac.in

CAY=Current Academic Year

^Add photographs

*Repeat this template for each department / staff.

#Repeat this template for additional quota, if any.